



Find

POLAR WORLDS

On Level 2

Here you can discover how humans have survived in the extreme climates of the Antarctic and Arctic. People have had to adapt clothing, technologies and their way of life to make these cold places their home.



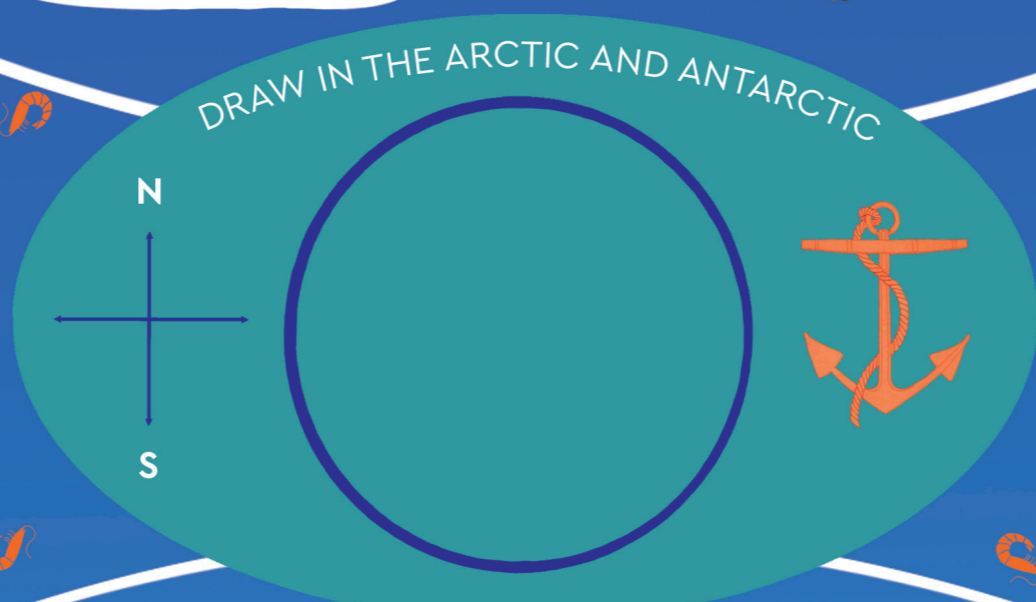
What do you imagine when you think of the polar regions?

Look at the landscape films and the paintings around you.

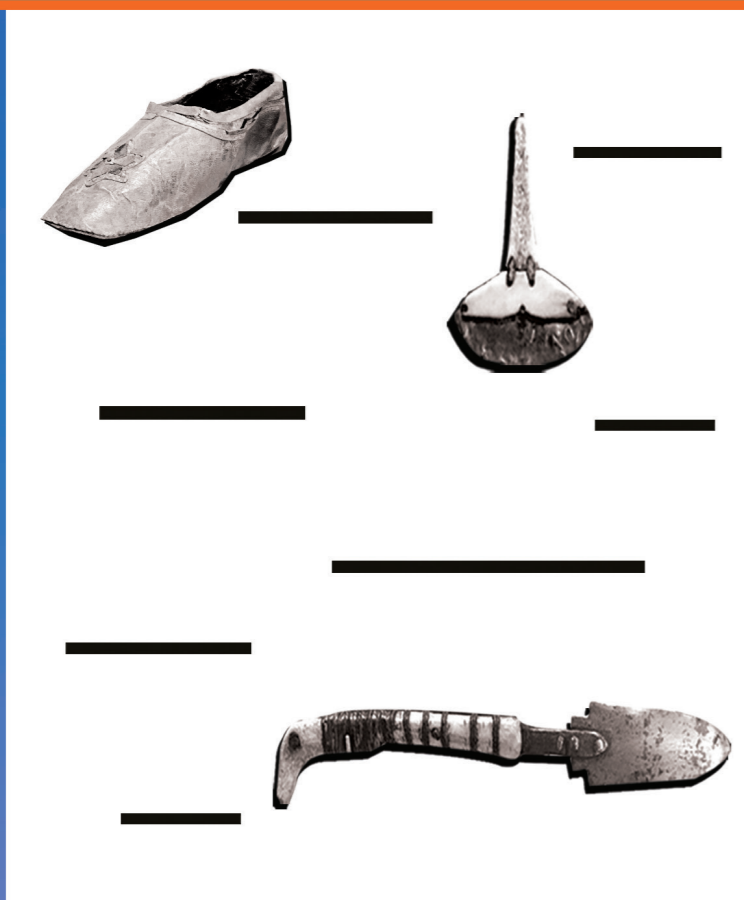
What words would you use to describe the landscapes?

The polar regions are being changed by global warming, tourism and industry.

How might these impact these polar environments?



Have a look at the case with Inuit objects in.



The Inuit are indigenous to the Arctic and have developed unique technologies to cope with the cold.

Why might these materials have been used to create these tools and carvings?



There are no indigenous communities in the Antarctic but every year scientists live there temporarily to study the environment.

Look around and pick 5 items you would take to help you survive in the polar regions.

Discuss your choices with someone else. Would they pick the same objects?

Remember you would have to carry them all. Try and pull the sleigh in the gallery to see how heavy it would be.



Finding food in the polar regions is vital to survival. Have a look at some of the high-calorie foods polar explorers took with them. They could also hunt and collect plants

What foods might you find? Look around you for ideas.



Find a spot on the Great Map to begin your journey.

When you are in the galleries, feel free to find a comfortable spot to sit - either on a bench or on the floor - to draw or write on trail. If you need any help during your visit, please see the map of the Museum.

Imagine that you are travelling through the Museum, exploring extreme environments such as the polar regions. Use this trail to record what you discover.

Stand in the centre of the Great Map and look north and south

Can you find the Arctic and Antarctic on the Great map?
What differences can you spot?

What do you think it would be like to live in an extreme environment?

What do you think an extreme environment looks like?

In the Museum you will find hundreds of incredible objects that tell the stories of people and their connections with the sea. Use this trail to discover amazing objects and record your journey.

ROYAL MUSEUMS GREENWICH

Now our adventure in the Museum is coming to an end, look back at your trail...

What did you see?

What was the highlight of your journey?

Is there anything else you would like to remember?

Add a drawing or make a note on your trail.

What will your next adventure be?

Illustrated by Priya Sundram

